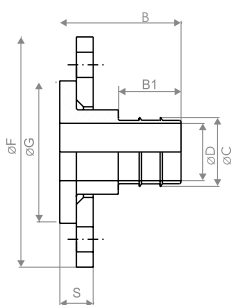


# Technical Data Sheet

## STRAUB-PLAST-PRO FA

## FLANGE ADAPTER

Components	Materials
Shells	AISI 316 L or similar
Bolts	A4 - 80
Bars	AISI 316 L
Liner insert	Carbon steel, Rilsan coated (W270, NSF61, WRAS)
Medium	all qualities of water
Temperature	-5°C up to 40°C 6



up to 110 mm: for PN 16 pipes<sup>6</sup>  
 from 125 mm: for PN 16 and PN 10 pipes<sup>6</sup>  
 > 180 mm: for PN 10 pipes<sup>6</sup>



### SDR 11

OD [mm]	Article DIN <sup>3</sup> multilayer	B [mm]	B1 [mm]	C [mm]	D [mm]	F [mm]	G <sup>9</sup> [mm]	S [mm]	Flange PN 16	Bolts Quan./Dim	Weight [kg]
63.0	870936 870900	83.0	45.0	49.5	41.0	165	107.0	28	DN 50	4x, M16	2.4
63.0	870939 870903	85.0	45.0	49.5	41.0	202	142.0	30	DN 80	8x, M16	4.1
75.0	870942 870904 <sup>2</sup>	85.0	45.0	59.5	50.5	187	127.0	28	DN 65	4x, M16	3.4
90.0	870945 870906	85.0	45.0	71.0	62.0	202	142.0	30	DN 80	8x, M16	3.8
110.0	870948 870909	92.5	52.5	87.5	76.0	220	162.0	30	DN 100	8x, M16	4.0
125.0	870963 870910	92.5	52.5	99.5	86.5	220	162.0	30	DN 100	8x, M16	4.6
140.0	870966 870911 <sup>2</sup>	92.5	52.5	111.5	97.5	250	192.0	34	DN 125	8x, M16	6.6
160.0	870969 870914	104.5	52.5	127.5	113.5	286	218.0	36	DN 150	8x, M20	11.1
180.0	870972 870917	104.5	52.5	143.5	126.5	286	218.0	36	DN 150	8x, M20	10.2

### SDR 17

OD [mm]	Article DIN <sup>3</sup> multilayer	B [mm]	B1 [mm]	C [mm]	D [mm]	F [mm]	G <sup>9</sup> [mm]	S [mm]	Flange PN 10	Bolts Quan./Dim	Weight [kg]
90.0	970946 970907	85.0	45.0	77.0	66.8	200	138.0	30	DN 80	8x, M16	3.9
110.0	870949 870908	92.5	52.5	94.5	82.3	218	158.0	30	DN 100	8x, M16	5.0
125.0	870951 870912	92.5	52.5	108.0	95.0	220	162.0	30	DN 100	8x, M16	4.2
140.0	870954 870913 <sup>2</sup>	92.5	52.5	121.0	107.0	250	192.0	34	DN 125	8x, M16	6.1
160.0	870957 870915	104.5	52.5	138.5	124.5	286	218.0	36	DN 150	8x, M20	10.2
180.0	870960 870918	104.5	52.5	156.0	139.0	286	218.0	36	DN 150	8x, M20	9.0
200.0	870975 870920 <sup>2</sup>	127.0	52.5	173.5	154.5	340	273.0	39	DN 200	8x, M20	19.2
225.0	870922 870922	127.0	52.5	195.0	173.0	340	273.0	39	DN 200	8x, M20	17.7
250.0	870924 870924	133.0	52.5	217.0	193.0	409	328.0	45	DN 250	12x, M20	31.7
280.0	870926 870926	133.0	52.5	243.0	217.0	409	328.0	45	DN 250	12x, M20	27.0
315.0	870928 870928	150.0	62.5	273.0	243.0	463	378.0	52	DN 300	12x, M20	40.7
355.0	870930 870930	158.0	62.5	308.0	274.0	515	438.0	60	DN 350	16x, M20	54.5