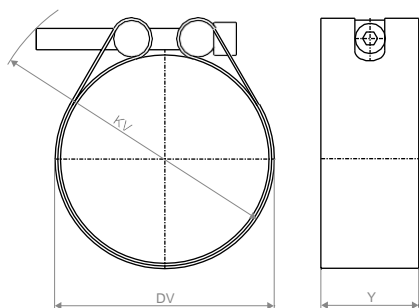


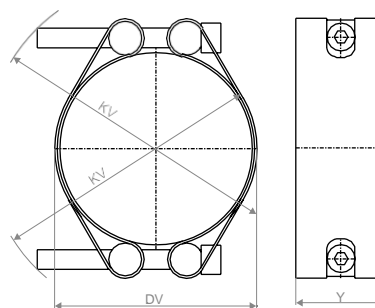
# Technical Data Sheet

## STRAUB-PLAST-PRO SHELLS

### PIPE DIMENSIONS ACCORDING TO 12201-2 | MULTIPLE PIPES



DN 63 up to DN 200



DN 225 up to DN 355

DN	DV braced		KV braced		Y [mm]	Allen head [mm]	Thread M..	Torque rate [Nm]
	DIN <sup>3</sup> [mm]	multilayer [mm]	DIN [mm]	multilayer [mm]				
63	65	67	95	95	47.5	10	12	50
75	79	82 <sup>2</sup>	106	107	47.5	10	12	55
90	94	97	120	121	47.5	10	12	60
110	113	117	139	140	55	10	12	60
125	129	132	155	156	55	10 / 14 <sup>4</sup>	12 / 16 <sup>4</sup>	60 / 120 <sup>4</sup>
140	144	147 <sup>2</sup>	170	170	55	14	16	130
160	165	168	188	189	55	14	16	150
180	184	188	216	217	55	14	16	160
200	204	208 <sup>2</sup>	235	236	55	14	16	180
225	227	230	258	260	55	14	16	160
250	251	255	282	285	55	14	16	160
280	282	285	311	313	55	14	16	160
315	318	321	355	357	60 / 70	17	20	280
355	359	362	394	397	60 / 70	17	20	300

### PIPE DIMENSIONS AND TOLERANCES

Our complete systems are designed for the pipe dimensions according to DIN EN 12201-2:2003 listed below. Multilayer pipes with different outer diameter than DIN EN 12201-2 are available in a variety of designs.

These are not standardised and therefore outside diameters and materials used may vary to large extent.

⇒ Due to the additional layers OD's and material of the additive layer may vary (consultation with the producer is necessary, if there is a metal layer integrated); Please note the following pipe dimensions and tolerances.

#### SDR 11

DN	OD min		OD max		Wall thickness min		Wall thickness max		ID <sup>5</sup> [mm]
	DIN <sup>3</sup> [mm]	multilayer [mm]	DIN [mm]	multilayer [mm]	DIN [mm]	multilayer [mm]	DIN [mm]	multilayer [mm]	
63	63.0	64.0	63.4	65.7	5.8	6.5	6.5	7.6	51
75	75.0	77.0 <sup>2</sup>	75.5	79.0	6.8	7.8	7.6	9.1	61
90	90.0	92.0	90.6	94.0	8.2	9.3	9.2	10.7	73
110	110.0	112.0	110.7	114.0	10.0	11.1	11.1	12.7	89
125	125.0	127.0	125.8	129.0	11.4	12.5	12.7	14.2	101
140	140.0	143.0	140.9	145.0	12.7	14.0	14.1	15.9	113
160	160.0	163.0	161.0	166.0	14.6	15.8	16.2	18.0	129
180	180.0	183.0	181.1	186.0	16.4	17.6	18.2	20.0	145

# Technical Data Sheet

## STRAUB-PLAST-PRO SHELLS

PIPE DIMENSIONS ACCORDING TO 12201-2 | MULTIPLE PIPES

SDR 17

DN	OD min		OD max		Wall thickness min		Wall thickness max		ID <sup>5</sup> [mm]
	DIN <sup>3</sup> [mm]	multilayer [mm]	DIN [mm]	multilayer [mm]	DIN [mm]	multilayer [mm]	DIN [mm]	multilayer [mm]	
90	90.0	92.0	90.6	94.0	5.3	5.4	6.0	6.5	79
110	110.0	112.0	110.7	114.0	6.5	7.5	7.8	8.6	97
125	125.0	127.0	125.8	129.0	7.4	8.5	8.3	9.8	110
140	140.0	143.0 <sup>2</sup>	140.9	145.0	8.3	9.4	9.3	11.1	123
160	160.0	163.0	161.0	166.0	9.5	10.7	10.6	12.4	140
180	180.0	183.0	181.1	186.0	10.7	11.9	11.9	13.7	158
200	200.0	203.0 <sup>2</sup>	201.2	206.0	11.9	13.1	13.2	15.0	176
225	225.0	225.0	226.4	230.0	13.4	14.6	14.9	16.6	197
250	250.0	250.0	251.5	255.0	14.8	16.0	16.4	18.3	220
280	280.0	280.0	281.7	286.0	16.6	17.8	18.4	20.1	246
315	315.0	315.0	316.9	321.0	18.7	19.9	20.7	22.4	277
355	355.0	355.0	357.2	361.0	21.1	22.3	23.4	25.1	312